

CALENDAR

<p>October 26-30 • Red Ribbon Week (WPS) • Student Led Conferences (ANTS)</p>
<p>October 28 • Pre-K & Kindergarten Fieldtrip to Berry Patch (AES) • Media Night (PPES)</p>
<p>October 29 • End of 1st Nine Weeks • Make-Up Picture Day (WES) • Fall Festival (AES) • Fieldtrip to Cotton Gin Grade 3 (AES) • Fall Festival 5:30 - 8 pm (LES)</p>
<p>October 30 • Optional Work Day (Non-Student Day)</p>
<p>October 31 • SAT Regular Registration Deadline for Dec. 5 Test Practice SAT (AHS)</p>
<p>November TBA • Student Regular Flu Shots 8:30 am - 12 pm for Anson Academy, Anson County Early College, Anson Middle School • Staff Regular Flu Shots 2 - 4 pm (Charles Riddle Staff Development Center) for Ansonville Elementary Staff, Lilesville Elementary Staff, Morven Elementary Staff, Peachland/Polkton Elementary Staff, Wadesboro Elementary Staff, Wadesboro Primary Staff, Central Office Staff • Staff Regular Flu Shots 2:30 - 4:30 pm (Charles Riddle Staff Development Center) for Anson Middle Staff, Anson High Staff, Anson Academy Staff, Anson New Tech Staff, Anson Early College Staff, Transportation Staff, Maintenance Staff • Student Regular Flu Shots 8:30 am - 12 pm for Anson High School, Anson New Tech • Student-led Instructional Conferencing Event (ACEC)</p>
<p>November 1-13 • SAT Late Registration for Dec. 5 Test • Book Fair (WPS)</p>
<p>November 3 • Optional Work Day (Non-Student Day)</p>
<p>November 5 • Accuplacer Testing (Placement Exam for SPCC) for all Students Grades 10-12 & AVID & Scholars Students Grade 9 • Media Night (PPES)</p>
<p>November 6 • ACT Regular Registration Deadline for Dec. 12 Test • School Fundraiser Ends (MES)</p>
<p>November 7 • Ansonville Parade, 3 pm (AHS, AMS, AES)</p>
<p>November 7-20 • ACT Late Registration for Dec. 12 Test</p>
<p>November 9 • Report Cards Released • Anson Bearcat Booster Club Meeting, 6:30 pm (AHS Media Center)</p>
<p>November 10 • Accuplacer Testing (Placement Exam for SPCC) for all Students Grades 10-12 & AVID & Scholars Students Grade 9 • Terrific Kid Celebration 7:45 am (AES) • Veterans Day Program, 10 am (MES) • School Improvement Team Meeting, 5:45 pm; PTA, 6:30 pm (WPS)</p>
<p>November 11 • Veteran's Day Holiday (Non-Student Day) • Annual BBQ Fundraiser (ANTS)</p>
<p>November 12-13 • CAPS Testing (Career Ability Placement Survey) for all 8th Grade Students</p>
<p>November 13 • Terrific Kids and Honor Roll Program 7:30 am (MES) • Super Senior College Credit Celebration Luncheon, 11 am (ACEC) • NC Symphony Performances (LES) for all Students Grades 4 & 5</p>
<p>November 16 • End of 1st Accelerated Reader Block (AES) • Terrific Kids & Honor Roll Assembly, 1:30 pm (WES) • PTO, 7 pm (LES)</p>
<p>November 17 • Make-up Pictures and Holiday Pictures (WPS) • McTeacher Night @ McDonald's, 5-8 pm (WPS) • Title I Family Math Games & Bingo Night 6:00 pm (MES)</p>
<p>November 17-18 • CAPS Testing (Career Ability Placement Survey) for all 8th Grade Students</p>
<p>November 18 • Terrific Kid Assembly (LES) • Assistant Teacher Day (WPS) • School Improvement Team Meeting (PPES)</p>
<p>November 19 • Accuplacer Testing (Placement Exam for SPCC) for all Students Grades 10-12, AVID & Scholars Students Grade 9 • Kindergarten Field Trip "Aw Shucks" Monroe (WPS) • Media Night (PPES)</p>
<p>November 20 • Terrific Kids Breakfast, 7:45 (WPS)</p>
<p>November 23 • School Improvement Team Meeting, 12 pm (ACEC) • Board of Education Meeting, 6:30 pm (Charles Riddle Staff Development Center)</p>
<p>November 24 • Mix It Up Day (MES) • Kindergarten Parent Workshop & Lunch, 12 pm (WPS) • Good Character "Big Shot" Assembly, 1 pm (LES)</p>
<p>November 25 • Optional Work Day (Non-Student Day)</p>
<p>November 26-27 • Thanksgiving Holiday Break (Non-Student Days)</p>
<p>December TBA • Holiday Social (ACEC)</p>
<p>December 1 • Community Outreach sponsored by ACS Social Workers and Nurses, 3-5 pm (WPS)</p>
<p>December 1-18 • Anson Crisis Ministry Canned Food Drive (MES)</p>
<p>December 3 • Wadesboro Christmas Parade, 5 pm (ACEC, AHS, AMS, WES, WPS) • Media Night (PPES)</p>
<p>December 5 • SAT Testing Date</p>



ANSON COUNTY SCHOOLS

320 Camden Road • Wadesboro, North Carolina 28170
 Telephone (704) 694-4417 • Fax (704) 694-7479 • www.ansonschools.org

BOARD OF EDUCATION Lisa G. Davis, Chairperson, Dr. Altheria Patton, Vice Chairperson, Leon Gatewood, Jacqueline Huntley, Michael Livingston, Beulah Pratt, Rev. Rob Rollins, Russell Sikes, Daniel Wilson
 Gregory A. Firm, Ed. D, Superintendent of Schools
 Frances G. Williamson, Deputy Superintendent of Schools

Greetings!

This is the inaugural publication of the quarterly newsletter for the Anson County Schools. Our best hope and intention is to keep you informed about different happenings in your schools. In this edition you will meet new staff to Anson County as well as new members of the Anson County Board of Education. You will also find timely calendar events as well as information about programs currently underway.

Last year, students and staff achieved unprecedented results as measured by North Carolina State End of Grade and End of Course assessments. With all but one of our elementary schools meeting 100% of their targets, there is indeed much to celebrate. Though that news is outstanding, we have work to do in all our schools to meet or exceed the accomplishments of last year.

Let me share a few insights as well as what is guiding the work to achieve high levels of learning for each student.

First and foremost, the mission of the Anson County Schools is: "Our mission is to ensure that ALL STUDENTS acquire the skills and knowledge necessary to be successful and responsible."

This mission can be summed up in three words "All means all!"

Our mission must drive our individual and organizational commitment to each student, parent, staff and community member in Anson County to make sure all students have access and opportunity for challenging learning experiences.

To that end, it is paramount that we build and sustain a climate of high expectations in each classroom, school, and department. We can-

not merely want each student to be successful we must expect it. High expectations for student learning and achievement should permeate throughout our county. High expectations must also be what we, the adults, model day in and day out in all aspects of our lives.

In a like manner, we must strive to have a clear instructional focus where the teaching and learning process is always, always made the priority in all our actions including decision-making. Equally, we must continue to work towards ensuring the teaching and learning process is individualized or personalized in such a manner that all learners attain mastery of the essential school curriculum.

Are we there yet?

No!

We have work to do!

I am confident that as we partner, working together toward a shared vision and common goals, each student in the Anson County Schools will meet and exceed the learning and achievement expectations we have for them. I ask that you help us help each student through feedback, input, and suggestions for improvement. This year we will launch on our website a way for you to do just that - tell us what you think and how to improve.

I am committed to continually seeking ways to improve what we do and how we do it so that our actions speak louder than our intentions. On behalf of staff, thank you for your interest and involvement in the Anson County Schools.

Respectfully, Dr. Gregory A. Firm, Superintendent of Schools

Anson County School District Welcomes New Board of Education Members



Leon Gatewood

Leon Gatewood was sworn in as the District 7 board member on August 5, 2009, replacing M. R. Bell. He is the eleventh of 14 children born to Reverend Wade H. and Geneva Gaddy Gatewood. Mr. Gatewood, a 1976 graduate of Bowman High School, received a B.S. Degree in Biology from Livingstone College in Salisbury, NC. He is currently employed as superintendent of the Anson County Regional Wastewater Treatment Plant. Mr. Gatewood founded HOLLA! in 2005 to help improve achievement levels in the schools. He has emphasized that he would like to see the schools and the community work together as a team to tackle the challenges of making sure each child is presented with an equal opportunity for education. When asked for a quote, Mr. Gatewood stated, "As we become more engaged in the village and encourage its input in our processes, these things will be more readily achieved."

Beulah Pratt was sworn in as a board member on December 3, 2008, replacing Lorenzo Steele as the Board of Education representative for District 3. She is the daughter of the late Brack and Maggie Cash Jackson. Ms. Pratt is a 1967 graduate of JR Faison High School, and she retired from Alltel after 26 years of service. She is a member of the New Life Christian Faith Church where she serves in many capacities. She is a charter member of Las Amigas, which has been serving the Morven Community for 25 years. When asked for her objective for the Anson County School District Ms. Pratt shared, "It is to educate each student to be a responsible and productive citizen who can effectively manage future challenges in this global economy."



Beulah Pratt



Daniel Wilson

Daniel Wilson was sworn in as a board member on December 3, 2008, replacing Lannie Allen. Mr. Wilson represents District 1 on the Board of Education. He was born, raised, and is now residing with his wife Stephanie and their family in Ansonville. Mr. Wilson graduated from Anson High School in 1995 and later received a B.S. in Civil Engineering from UNC Charlotte and a MBA from East Carolina University. He now serves as Executive Director of the North Carolina Rural Water Association. Mr. Wilson is licensed as a Professional Engineer and is a Registered Lobbyist at the NC General Assembly. In addition to his education and career, he enjoys volunteering in his community as President of Ansonville Volunteer Fire Department and has served in several capacities at Red Hill Baptist Church over the years. Mr. Wilson believes in the education and development of young people, having served as Youth Leader at his church for the past decade and having spent many hours mentoring and counseling teenagers in his community. When asked what motivated him to want to be on the Board of Education, Mr. Wilson explained, "I believe in Anson County and the School District and look forward to serving the youth of our county."

McGrath Bullying Program

McGrath Bullying Program has been introduced into all of the schools in the Anson County School System. McGrath Bullying Program is a two-part program that educates and addresses the bullying that goes on in school.

First, student and staff are shown DVD's on the signs and the effects of bullying. Next, the definition of bullying is taught to both students and staff.

Bullying is defined as any pattern of gestures or written, electronic, or verbal communications, or any physical act or any threatening communication, that takes place on school property, at any school-sponsored function, or on school bus that places a student or school employee in actual or reasonable fear of harm to his or her person or damage to his or her property.

The final part of the McGrath Bullying program requires the principal to investigate reports of bullying. If a pattern can be determined, the student will be disciplined for bullying.

Fast ForWord - An Integral Part to Anson County Schools' Adequate Yearly Progress (AYP) Success

Educator's Briefing stated, "In four months students in the Anson County School District improved reading by one year."

"Anson County School District Recognized for helping struggling readers achieve significant gains." - Business Wire.

"The Scientific Learning Corp. has selected the Anson County School District in North Carolinas a National Reference site for its outstanding use of the company's program."



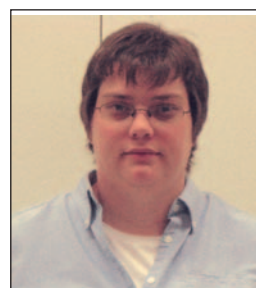
FastForWord Lab at Morven Elementary School

These are just some of the comments that have been made about Anson County Schools' success with Fast ForWord. However, these comments may also make you wonder what, how, who and why is this program making such a difference in our schools.

What is Fast ForWord? "Fast ForWord is a family of educational software products that accelerate learning by developing the student brain to process more efficiently." - Business Wire. Nancy Bricker, a teacher and Fast ForWord Coach at Peachland Polkton Elementary School, stated that, "Students who are engaged in the Fast ForWord program experience significant improvements in memory, attention processing and sequencing skills (MAPS) that impact their learning in all areas of academics and sports."

What is happening and has happened in our school systems due to Fast ForWord? Anson County Schools started implementing the program in 2007 in all schools in order to improve reading proficiency among at risk students and students with disabilities. Dr. Greg Firm, Anson County Schools Superintendent, stated that, "Across the district we've seen anywhere from one to three years of growth in many of our students." Some students have even experienced growth leaps up to 5

Anson County Schools Teacher and Principal of the Year



Steffany Labree

2009-2010 Anson County Schools Teacher of the Year is Steffany Labree, Anson New Technology School. "When one envisions the attributes of an effective educator, everything about Steffany Labree resonates. Her commitment to education is unwavering and her drive to impact students is unmatched. She is able to take unmotivated students and motivate them, unfocused students and focus them, and disengaged students and engage them. Her commitment and drive not only impacts students, but the larger community as a whole. Anson County is fortunate to have an instructional leader such as Steffany Labree," said Principal, Chris Stinson.

2009-2010 Anson County Schools Principal of the Year is Betsy Ammons, Wadesboro Primary School.

"Mrs. Ammons was selected as the Anson County Schools 2009-2010 Principal of the Year by colleagues who admire and envy her accomplishments as the Principal of Wadesboro Primary School. Due to her leadership the staff at WPS has made great accomplishments on behalf of children. Mrs. Ammons is an innovative leader who diligently works to recruit superior teachers while constantly mentoring all staff members at her school. She completes every task with qualities of perfection. The success of her elementary school provides evidence of her great leadership!" said Executive Director of Teaching and Learning, Michael Freeman.



Betsy Ammons

Make Your Day

The district's Citizenship and Discipline program is in its third school year. The Make Your Day Program uses free will and choice to enhance the students' ability to develop an internal locus of control. Make Your Day has one rule, "No one has the right to interfere with the learning, safety and well being of others" and two expectations, "Do what is expected and do it the best you can."

Make Your Day was put in place because we needed to move from our previous focus of telling students what to do and when to do it. Research tells us what is needed to move students from dependence to independence. The Make Your Day Program has the two anchors of structure and choice that are required to move students to make good choices.

Make Your Day works for our students by providing a consistent form of discipline. Students hear a common language about expectations and choice. Students quickly learn that their choices determine consequences.

Parents get an opportunity to be involved in the decision making process for disciplining their child. This opportunity takes place in the form of a step-four parent conference. Parents get an opportunity to talk with their child and the teacher about the problem. Then the parents decide if the child can return to the class or if the child needs to be removed for the remainder of the day.

years. Currently, Fast ForWord is a part of all Anson County Schools. It is even being used at the Anson County Early College in order to help strengthen skills so students can take community college level courses.

How does Fast ForWord work? Michael McLeod, Executive Director of Individual and Organizational Accountability and former principal of Anson High School, said, "The Fast ForWord products provide our students with the best and most advanced neuroscience to accelerate their language and reading skills"

Michael Freeman, Executive Director of teaching and learning for Anson County School District and former principal of Peachland-Polkton Elementary School, stated that, "Selected students work with the Fast ForWord software for 40-50 minutes per day, 5 days a week." Fast ForWord helps the user recognize initial sounds and in return builds brain capacity which leads to increased learning. The program gives daily assessments with individualized reports. These reports identify problem areas daily and notify the instructor that the student needs to revisit the same material during the next session.

However, when students pass their daily material or master a level many schools in Anson County are finding ways to keep kids excited about the program by recognizing the "little successes" along the way. Marilyn Bennett, Morven Elementary School Principal, spoke about how they recognize their students weekly over the PA system and allow trips to the treasurer box.

Who benefits the most from Fast ForWord? Considering the fact that Fast ForWord has been implemented into all Anson County Schools everyone can benefit. In fact, studies are showing how elderly people or people who have experienced brain damage can significantly benefit from the Fast ForWord approach of learning.

Why does it work? Nancy Bricker commented that, "The graphics, interactive opportunities and immediate feedback make it very engaging for every student." After, attending a Fast ForWord lab at Morven Elementary School, it is easy to see that the kids love it.

"One of the greatest benefits of the Fast ForWord Program is that children are making lifelong changes in their learning that extend well beyond passing a course or getting a good report card. That's what makes this product different than anything else we've ever done. Teachers tell us children are more attentive, and better able to focus and complete their work. These changes can have a positive impact on students' performance across all subjects for the rest of their schooling and for the rest of their lives," said Freeman.

You can visit the website at www.scilearningtogether.com to learn more about this product.

We as community need to remember how to celebrate little successes/gains along the way, as well. We need to remember how important our school system is to our County's future. We owe all of our Anson County teachers many thanks and much appreciation for their daily perseverance in making Anson County's future brighter and for believing in the children in our community.

With fall here and the winter months right around the corner, it's time once again to think about the possibility of school closings due to weather conditions. The safety of all children is our first concern when deciding whether to close school or whether to delay school openings because of inclement weather conditions.

An announcement to close schools or to delay the opening of schools will be made as early as possible. The decision will be made on the evening before, when feasible.

Once the decision has been made, Connect-ED, our automated phone messaging system, will be used to contact all students and staff members in our district. Families can also tune into the following television and radio stations for information: WBTV Channel 3, WCNC-TV Channel 6/36, WSOC-TV Channel 9, NEWS 14 Channel 14, WFAE FM Radio 90.7, WRCM FM Radio 91.9, WSOC FM Radio 103.7, and WADE AM Radio 1340.

In addition to going out over Scanner 453.624, delays and closings due to inclement weather will be posted on the homepage of the Anson County School website: www.ansonschools.org.

Should severe weather conditions develop during the school day announcements of early dismissal will be made using Connect-ED.

It's never too early to be prepared. Parents are encouraged to begin to think about making after school arrangements for their child should schools close early. It is especially important that young children and their teachers know where the child is to go after school in case of early dismissal.

Co-Teaching at Anson Middle School

Getting the "best" of two worlds is the best way to describe a powerful cutting edge teaching and learning approach underway in the Anson County Schools. This strategy is called "co-teaching." It combines a teacher trained in delivering special education instruction with a teacher trained in either Mathematics or Language Arts. The learning environment looks just like a regular classroom but has two highly trained staff working with students.

One school that is leading the way is Anson Middle School. Principal Mr. McLean recently held what he calls, "A Meeting of the Minds" to get feedback from the co-teachers. During this meeting, co-teachers were able to candidly address matters, such as the positive impact of co-teaching on teaching and learning, expectations of their co-teaching partner, lesson plan development, and the overall atmosphere of the co-teaching classroom. Each teacher was given an opportunity to provide private feedback after the meeting by talking to Mr. McLean and by completing a feedback form. Overall, the meeting was an opportunity for teachers to participate in genuine dialogue.

Since its implementation during the first week of school with co-teaching in place as a strategy to meet the needs of all students, Dr. Dom Vita of Futures Education Services has visited and observed in the co-teaching classrooms on a monthly basis. In addition, he has given individual assistance to the co-teachers. We are looking forward to additional professional development by Dr. Vita and Dr. Eve Proffitt in November.

Co-teaching has the opportunity to drive teaching and learning to new levels of achievement for all students. So far, it is having the desired and expected results.

Learning Together (L2) Making a Difference

Learning Together is one strategy in the Anson County Schools put into practice to specifically work with students that are close to making proficiency in reading or math. It is a cross-age tutoring program that has yielded results in all our elementary schools.

Mr. M. A. Godwin, Principal at Lilesville Elementary School states, "We are very fortunate to have three excellent coordinators working with L2. Mrs. Debbie Griffin heads up our math, Ms. Jackie Rivers leads our reading, and Ms. Pam Tillman steps in to sub in either course when needed. The program consists of tutors and tutees at least two grade levels apart. Tutors are trained in reading and math skills that reinforce their skills. They use these skills with tutees twice a week under the supervision of coordinators. It is the best of both worlds. Tutors work on their skills and provide leadership while tutees also work on their skills."

Students use the very best books that have a wide variety of subject areas and topics. Mr. Godwin and the staff at Lilesville are able to see the tremendous benefit of this program.

"Our tutors and tutees have been selected and have been working for the last several weeks and are doing a great job. We look forward to measuring the progress of all students involved and believe the academic gains will be significant," commented Mr. Godwin.

Golden Leaf

The Golden Leaf Foundation provided over \$500,000 for the purchase of technology in the Anson County Schools. This technology is in the form of laptop computers for New Tech students as well as three new computer labs at Anson High School.

The grant was awarded last spring with money coming in time to make purchases to impact teaching and learning at both schools.

The laptops expand what is called the 1-1 initiative where there is one computer for every student. This is critical for the project-based learning environment at New Tech. Mr. Stinson and staff participated in an intense summer workshop to learn the power of the new Apple laptops. "These are not only powerful, they take learning to new levels," commented Mr. Stinson.

In addition, the three labs at Anson High School are to support both the Fast ForWord and Reading Assistant initiative for all students deficient in reading. Ms. Campbell, Literacy Coach at Anson High School who directs their Fast ForWord initiative, enthused, "We are already seeing the difference in our ninth graders who take seriously their time in the new labs. They are already making significant growth."

The Anson County Schools appreciates greatly the investment in our students through this funding.

Anson Schools Budget Information

This year has been the most challenging budget year in the history of Anson County Schools (ACS). The ACS Board of Education approved a balanced budget for 2009-10 that maintains the continuation of Anson County Schools' current operations and programs.

The approved budget for this school year is \$44,322,764. This is a net reduction of over 3 million dollars from 2008-09 budget. The operation of the budget is reported monthly at the Board of Education's business meeting the last Monday of every month.

In order for Anson County Schools to continue to deliver services to students, ACS receives many different types of funding sources as listed below:

- Funding Sources**
- State appropriation \$24,668,855.99
 - Federal sources \$5,377,154.17
 - Federal stimulus & stabilization \$2,836,763.00
 - Child Nutrition \$3,227,000.00
 - Capital Projects - State Capital (Lottery) \$665,952.34
 - Capital Outlay - Local Funds \$356,778.53
 - Capital Outlay - State Bus Lease \$544,750.83
 - Local Current Expense - County Appropriation \$3,755,927.71
 - Local Current Expense - Other \$2,800,062.61
 - Grant - Local Funds \$89,519.00

Total Adopted Budget 2009-10 \$44,322,764.18

The budget for 2009-10 school year reflects reductions that were made only after careful consideration of keeping classroom resources and support at the highest level possible.

As the Board of County Commissioners faces drastic diminishing resources as we are, they did not reduce the local current expense allocation for FY 09-10. With this gracious and most compelling funding support, the Anson County Board of Commissioners share our concerns and demonstrate the commitment to maintaining our core instructional programs and our local teacher supplements for certified staff without negatively impacting required support for schools, staff, and students.

For more information on the ACS Budget visit our website, www.ansonschools.org.

Two Schools Begin Extended Days this School Year

Ansonville Elementary School and Peachland/Polkton Elementary School have both made the decision to lengthen their school days during the 2009-2010 school-year to better meet the learning needs of all students.

"Our extended school day is providing additional time to incorporate the research based programs such as Fast ForWord, Headsprout, and Learning Together. Due to the extra time, our data has shown an increase in participation and an improvement in attendance for Fast ForWord. Overall the extended day has benefited our instructional capacity on a daily basis," stated Randy High, Principal of Ansonville Elementary School.

Craig Wright, principal at PPES commented, "We only increased our students' day by ten minutes. This gives our teachers one extra 30 minute block at the end of each day. We have added a one hour literacy block from 8 to 9 a.m. and we needed that last block to be able to get in all the other important programs such as art, Fast ForWord, Learning Together, physical education, etc. It has been great! Absolutely no problems and we have been able to maintain roughly the same schedule as last year in addition to the new 60 minute Literacy Block. We are currently working with Ms. Ammons the principal at Wadesboro Primary School to train our teachers in new strategies to use in this new block. We hope to see results on the End-of-Grade tests this year."



Process Management System (ProMS)

One of the greatest challenges in any organization, business, or work place is to find ways to do the work more efficiently and more effectively. Another challenge of any business is to authentically and sincerely ask their customers how a service or product can better meet their need. These two challenges are at the center of a new initiative in the Anson County Schools called process management.

Simply, process management is a way to monitor, measure, and assess processes in all the operational and instructional areas of the school system. Key to process management is 1) a corrective action process, and 2) a customer feedback process.

Corrective action is a way to ask customers to identify where we can improve in delivering a service. Customer feedback is asking about the level of satisfaction customers have with the service being provided.

In the Anson County Schools students, parents, staff, and community members will have an authentic role in making our schools and all the services we provide better. Mr. Michael McLeod, Executive Director of Individual and Organizational Accountability, is leading this initiative. Watch the school system's website, www.ansonschools.org, for more information and how you can participate.

CALENDAR

December 7
• Christmas Shop, 5:30 pm; Parent Technology Night, 6 pm; PTA Meeting, 7 pm (AES)
December 8
Writing System Assessment 2 Content-Specific for all Students Grades K-8
December 9
• Show Choir Performances (MES, LES)
December 10
• Show Choir Performances (WPS, WES)
• School Improvement Team Meeting (PPES)
• District Band Program Winter Concert, 7 pm (AHS Gymnasium)
December 11
• Show Choir Performances (AES, PPES, AMS)
December 12
• ACT Testing Date
• Christmas Dance (ANTS)
December 14
• PTA Math Night (WES)
• Lilesville Christmas Parade, 6 pm (AHS)
• Board of Education Meeting, 6:30 pm (Charles Riddle Staff Development Center)
• Anson Bearcat Booster Club Meeting, 6:30 pm (AHS Media Center)
December 15
• PTA & Annual Christmas Program, 6 pm (MES)
• SAT Regular Registration Deadline for Jan. 23 Test
December 16-30
• SAT Late Registration for Jan. 23 Test
December 17
• Dare Graduation, 1:30 (WES)
• Media Night (PPES)
December 18
• Early Release for Students - 1 pm Dismissal: All Elementary Schools & 1:30 pm Dismissal: Middle School, All High Schools
December 21-31
• Christmas Holiday Break (Non-Student Days)
January 1
• New Year's Day Holiday (Non-Student Day)
January 4-15
• PRI Testing (Texas Primary Reading Instrument) for Lilesville Elementary Students Grades K-3 & Morven Elementary Students Grades K-3 & All Wadesboro Primary Students
January 5
• ACT Regular Registration Deadline for Feb. 6 Test
January 6-15
• ACT Late Registration for Feb. 6 Test
January 7
• Media Night (PPES)
January 11
• Anson Bearcat Booster Club Meeting, 6:30 pm (AHS Media Center)
• PTO, 7 pm (LES)
• Nutcracker Play, 7 pm (AES)
January 12
• Countywide Spelling Bee (Charles Riddle Staff Development Center)
January 16
• Gospel Choir Winter Concert (AHS)
January 18
• Martin Luther King, Jr. Holiday (Non-Student Day)
January 20
• Classroom Pictures (WES)
January 21
• Media Night (PPES)
January 22
• End of 2nd Nine Weeks
January 23
• SAT Testing Date
January 25
• Board of Education Meeting, 6:30 pm (Charles Riddle Staff Development Center)
January 25-26
• Optional Work Day (Non-Student Day)
January 29
• Terrific Kids Program 7:30 am (MES)
February 1-5
• School Counselor Week (WPS)
February 1-28
• ACCESS for ELLs Testing (Assessing Comprehension and Communication in English State-to-State for English Language Learners) for all Limited English Proficiency Students Grades K-12
February 2-3
• 2nd Reading & Math Benchmark Testing for all Students Grades K-12
February 4
• SAT Regular Registration Deadline for Mar. 13 Test
• Spring Pictures (MES)
• Media Night (PPES)
February 4-5
• Benchmark Testing Make-up Days
February 5
• Group Pictures (LES)
February 5-18
• SAT Late Registration for Mar. 13 Test
February 6
• ACT Testing Date
February 8
• PTA Technology Night (WES)
• Anson Bearcat Booster Club Meeting, 6:30 pm (AHS Media Center)
February 9
• Relay for Life Fundraiser at Burger King (WES)
• School Improvement Team Meeting, 5:45 pm; PTA, 6:30 pm (WPS)
February 10
• School Improvement Team Meeting (PPES)
February 12
• Black History Assembly (WES)
February 15
• Report Cards Released
February 15-19
• Kindergarten Parent Technology Workshops (WPS)
February 16
• Writing System Assessment 3 On-Demand for all Students Grades K-8
• PTA, 6 pm (MES)
February 17
• Terrific Kids & Honor Roll Assembly (WES)
February 18
• Media Night (PPES)
February 22
• Board of Education Meeting, 6:30 pm (Charles Riddle Staff Development Center)
February 23
• Relay for Life Fundraiser at McDonalds (WES)

Anson Schools Welcomes New Staff

• Camela Bell

College: Winston-Salem State University
 Hometown: Lexington, KY
 Position: Administrator of Teaching and Learning; Anson High School
 Interests/Hobbies: Spending time with daughter and family, reading, shopping, traveling, running, and visiting Children's Hospitals.
 Favorite Quote: "If you are too busy to help others succeed, then you are too busy to succeed yourself."

• Lucian Brown

College: Central Texas College
 Hometown: Hughes, Arkansas
 Position: JROTC; Anson High School
 Interests/Hobbies: Restoring automobiles, fishing and watching a varsity of sports.
 Favorite Quote: The Five B's: "Be Brief Brother Be Brief."

• Emmette Cox

College: The Citadel
 Hometown: Jamestown, NC
 Position: Physical Science Teacher; Anson High School
 Interests/Hobbies: My dog, Flash
 Favorite Quote: "Everything should be made as simple as possible, but not simpler" ~Albert Einstein

• Corey Davis

College: UNC-Charlotte & Gardner-Webb University
 Hometown: Wadesboro, NC
 Position: Transportation & Driver Education Administrator and Safety Coordinator; Transportation Department
 Interests/Hobbies: Farming and spending time with my daughter
 Favorite Quote: "Better to remain silent and be thought a fool than to speak out and remove all doubt." ~ Abraham Lincoln

• Freda Day

College: University of South Carolina
 Hometown: Columbia, SC
 Position: Exploring Career Decision Teacher; Anson Middle School
 Interests/Hobbies: Writing,

listening to a variety of music, walking my dogs and going to the beach. "I completed my first novel in 2005 entitled, "From the Green Leaf to Greener Pastures."
 Favorite Quote: "Excuses are the nails used to build a house of failure." ~Don Wilder

• Brian Edwards

College: Columbia Southern University
 Hometown: Smithfield, VA
 Position: JROTC; Anson High School
 Interests/Hobbies: Golf, fishing and hunting
 Favorite Quote: "How long can you pretend to be something before you become it."

• Michelle Fowler

College: Indiana University & Wingate University
 Hometown: Monroe, NC
 Position: Biology & Earth and Environmental Science Teacher; Anson High School
 Interests/Hobbies: Gardening, crossword puzzles and sudoku
 Favorite Quote: "All beings tremble before violence. All fear death. All love life. See yourself in others. Then whom can you hurt? What harm can you do?" ~ Buddha

• Erica Schmidt

College: University of Nebraska-Lincoln
 Hometown: Columbus, NE
 Position: EC Teacher; Peachland-Polkton Elementary School
 Interests/Hobbies: Reading, running, rock climbing, spending time with family and friends.
 Favorite Quote: "We love because He first loved us." 1 John 4:19 "The mediocre teacher tells. The good teacher explains. The superior teacher demonstrates. The great teacher inspires." ~ William Arthur Ward

• John Greene

College: Frances Marion
 Hometown: Cheraw, SC
 Position: Maintenance Technician; Maintenance Department
 Interests: Fishing, hunting, golfing
 Favorite Quote: "Get'er done."

• Linda Melvin

College: NC Agricultural and Technical State University & Howard University
 Hometown: Roseboro, NC
 Position: Health Occupations Teacher; Anson High School
 Interests/Hobbies: Reading and cooking
 Favorite Quote: "All things are possible for those who believe."

• Ashley Moss

College: Wingate University
 Hometown: Mint Hill, NC
 Position: OCS Math & Co-Teaching Algebra; Anson High School
 Interests/Hobbies: Animals, scrap booking, camping, and four-wheeling.
 Favorite Quote: "Everything happens for a reason."

• James Schulert

College: Eastern Michigan University
 Hometown: Rochester Hills, MI
 Position: World History Teacher; Anson High School
 Interests/Hobbies: Camping, traveling and video games
 Favorite Quote: "A true hero is one who works more for others than for himself." ~Lloyd Alexander

• Anita Strawn

College: Presbyterian Hospital School of Nursing
 Hometown: Peachland, NC
 Position: Health Occupations Teacher; Anson High School
 Interests/Hobbies: Reading and traveling
 Favorite Quote: "Never look down on someone unless you're helping them up." ~ Jesse Jackson

• Sarah White

College: Earlham College
 Hometown: Chapel Hill, NC
 Position: English III Teacher; Anson County Early College
 Interests/Hobbies: Dancing, listening to music, reading, writing and traveling. "I taught ballet and creative movement for the past few years."
 Favorite Quote: "Time flies like an arrow. Fruit flies like a banana." ~ Groucho Marx